

Laurel Wreath

Volume 35 • Issue 3

Newsletter of the Rhododendron Needlers Quilt Guild

January/ February 2018

November - December 2017 Newsletter Article from our President

Happy 2018. Welcome to a new and busy guild year. We have several great programs and the Retreat coming up and plans for next year 2018-2019 are well underway.

Unfortunately, the January meeting has been cancelled. February will be busy, busy, busy! Our program will be the Member Demonstration, originally scheduled for January, and there are a number of important items to cover during the business portion of the evening.

Please remember to bring one or more 9 patch blocks on Wednesday February 21st - the Comfort Quilts section of this Newsletter provides the schedule for the color of the month. Also, there are two Newsletter items relating to charitable - Food Pantry and School - efforts.

Stay warm and see you all on in February.

Helen



**The Fuller Craft Museum
Threads of Resistance -
It is a MUST SEE !!!!**

These quilts are a mix of controversial messages AND excellent technique execution.
Come see them for inspiration, education, and perhaps some shock value.

More info on the Fuller website – www.fullercraftmuseum.org

Let me know if a group wants to go together.
I'd love to meet you there, or come on your own.
BUT DO COME.

And happy new year to all my quilting friends in the RNQG.
Laura Rosenspan

Our guild is always seeking new members, new ideas and new volunteers. In an effort to increase our exposure the board is suggesting a new strategy. We would like to have several small displays of our members quilts in local libraries (or other gathering places in our towns). We hope such displays, with accompanying newspaper articles, will serve to advertise our guild and attract other quilters to join us.

I have divided us into smaller groups of contiguous towns for this purpose. You may be asked to contribute a quilt or two for display in your local library or in a library of a town close to you. More information regarding this endeavor will be forthcoming. If you have any suggestions to promote this idea, please contact me.

Jane McClellan



QUILTED COMFORT

Happy New Year.

This year we are making 9 patch blocks. Please make one or more of any or all blocks.

Finished blocks will be 12½". For each block, you will need:

- #4 4 ½" solid (or small prints that 'read' as the color) , and
- #5 4 ½" white or tones of white blocks

A different color will be requested each month...with turn-in at the following month's meeting.

September

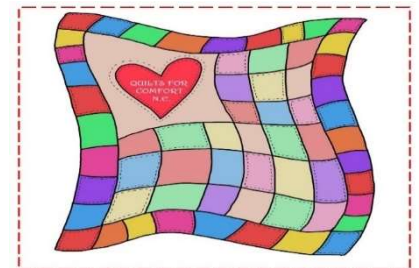
Any color

Turn in

October.
November.
January.
February.
March.
April.
May.

Dark blue solids/small print
Dark green solid/small print
Brown solid/small print
Red/white/blue/patriotic
Dark purple solid/small print
Quilter's choice /solids/small print
Yellow/gold/mustard/small print

November
January
February
March
April
May
June



Also, if you know of someone that is in need of a comfort quilt please let me know at mfsew222@gmail.com If anyone has suggestions for comfort quilts I would love hear from you.

Thank you,
Marie Fowler

BREAKING NEWS ABOUT OUR MEMBERS

Quilt Inspiration

Exemplary Cat Quilts

Posted: 10 Jan 2018 04:26 AM PST

If there are any animals who seems to really love quilts and are curious about them, it has to be cats. Here's a tribute to our feline furbabies, as shown by some of our favorite cat quilts from the 2017 Houston International Quilt Festival



Sami, aka Tree Kitty by **Lisa Steinka**, Massachusetts, U.S.A.

Lisa writes, "This is a reproduction of an original photo of my cat, Sami, that I took, developed, and printed over 40 years ago. The applique was done in the style of [quilt artist] [David Taylor](#)."



Close-up, **Sami a.k.a. Tree Kitty**

Lisa's original design uses cotton fabrics and cotton batting, with hand-piecing, hand-applique, and embroidery. She has done an excellent job at conveying the dignity and nobility of Sami in his devotion to enjoying life in the tree tops.

RNQG Quilt Bees



Last year 19 of our members signed up to join 6 different quilt bees so that they could spend time sewing with other members and get to know them. We have not heard from them and are wondering how the bees are doing. We would love to have each of the bees share what they have been up to at our next meeting.

One of the suggestions that I had made at the time the bees were created was that each bee decide on a theme and create quilts that could be hung together at the next quilt show. Our bee, yet to be named, has decided to work on Ann Shaw patterns.

We know that there are new members who have since joined the guild. If anyone would like to join a bee or create a bee, please don't hesitate to contact me, Terry Greenstein

With a heavy heart we inform you that our friend and longtime RNQG member Barbara Becker, passed away in early January. When Barbara made you a friend, you became a part of the wonderful world of this quirky and incredibly smart and talented lady.

Happy New Year fellow quilters!

I've heard it said by many guild members, "How can we get the next generation interested in sewing & quilting?" My daughter, Kathleen, Founder and Principal of Jefferson RISE (Public) Charter School in Gretna Louisiana, has a teacher in her school that is trying to do exactly that! Jefferson RISE services a working class community that, like New Orleans only 15 minutes away, was ravaged by Hurricane Katrina. At the beginning of this school year Kathleen asked for proposals to bring 'the arts' into the school, and Ms. Blunt proposed a Sewing & Design Program.

Along with a small amount of \$\$ from the school budget, Ms. Blunt (see link below), is hoping to fund a more robust program through donations via the non-profit organization, www.DonorsChoose.org. Donors Choose 'vetts' all teacher-applicants and their proposals and, once approved, puts their proposals onto the Donors Choose website, where donors (like you and me!) can choose which projects to support. Once a project is FULLY FUNDED through donations, supplies listed in the proposal are purchased 'wholesale' by Donors Choose thereby making donations through Donors Choose go a VERY long way. The project must be FULLY FUNDED BY THE DEADLINE – no partial purchases. Here's how you can help support the love of sewing in the next generation in a community that would be so very grateful:

1. Through the Donors Choose website... (as of 1/7/2018, this project still needs \$620 **before March 6th**).

https://www.donorschoose.org/project/sew-we-want-to-set-up-shop/2884458/?utm_source=dc&utm_medium=email&utm_campaign=teacher_favorite_new_project&rf=email-system-2017-11-teacher_favorite_new_project_give

2. If the Donors Choose project above is fully funded... but you would like to contribute \$\$ to Ms. Blunt's Sewing Program, **make your** check, payable to "Jefferson RISE Charter School" and write, "For Sewing Program ONLY", in the check Memo section. Mail to Ms. Kathleen Sullivan, Jefferson RISE Charter School, [501-B Lapalco Blvd., Gretna, LA 70056](#).
3. I'll collect donations of Sewing Supplies (i.e., Fabric/Thread/etc.) at upcoming guild meetings.

Any donation of \$\$ and/or Sewing Supplies of any size is much appreciated!! Please contact me with any questions at dottie@sullivancrew.com – thanks!

Dottie Sullivan

Are you interested in reducing your stash? duplicate items? why did I buy 'that' or 'this'? or someone else's stash always looks better?

Since we no longer can offer beverages or snacks prior to the meeting, we'd like to set up some selling tables for \$5 each for you to sell your items at each guild meeting.

The 'sellers' will change each month so all who are interested have a chance to reduce their stash! At the February guild meeting, we will discuss the details and get input from you of how to do that!

see you at the meeting and stay warm!

Jacqueline - truflztoo@gmail.com

BOARD of DIRECTORS MEETINGS

Board meetings are held 6:30 - 8:30PM at:
Walpole Public Library
143 School Street
Walpole MA

ALL Members are Welcome to attend.
All board members are highly encouraged to attend
The next Board meeting is scheduled for **March, 7, 2018**

BOARD OF DIRECTORS 2017- 2018

President	Helen Curtis
Vice President.	??
Secretary.	Sue Crane
Treasurer.	Karen LeBlanc
Programs 2017-2018	Terry Greenstein
Programs 2018-2019. . . .	Jacqueline
Fleishman	
Membership.	Mary Peterson
Newsletter	Vicki Pariyar
Hospitality.	RuthAnn Seck
	Joanne Beaupre
Monthly Raffle.	Lisa Steinka
Comfort Quilts	Marie Fowler
Rack Keeper.	Diana Annis
Connecting Thread.	Deb Bonanno
NEQMA Liaison.	Anita Loscalzo
Auction/Fundraiser.	??
Quilt Show 2019.	Jane McClellan
Historian.	Kathy Graves
Raffle Quilt 2017.	??
Webmaster.	AnneMarie Freitas
Facebook Guru.	Deb Woodhams
Publicity.	Judy Schimdt



RNQG Meeting Dates 2017 - 2018

Mark your calendars~

January 17, 2018 -Cancelled

February 21, 2018

March 21, 2018

April 18, 2018

May 16, 2018

June 20, 2018

RNQG MONTHLY MEETINGS

RNQG meetings are held on the 3rd Wednesday of the month, from September through June.

MEETING SPACE for 2016-2017:

Norfolk County Agricultural High School
400 Main Street
Walpole, MA

Social time starts at 7:00 PM and the business meeting at 7:15 PM.

Getting to know each other is important.

Please remember to wear your nametag to meetings. If you do, you'll receive a raffle ticket for a fun prize

RNQG FACEBOOK

Please "friend" us on our Facebook page,

Rhododendron Needlers Quilt Guild.

Invite your friends to join our page as we step into the world of Social Media. Check it out and see what is happening in our community

The Facebook Guru is Deb Woodhams

CONNECTING THREADS

This year the RNQG contact person for Connecting Threads is Deb Bonanno.

If you know of a guild member who has been ill, had a death in the family, was recently married, had a baby, or needs a friendly greeting for any reason, please contact the [Connecting Threads Coordinator](#) on our guild website.

January – February Program Report

The year has gotten off to a great start. In October we had 11 members take Ann Shaw's class and some of the quilt tops have already been completed. Ann gave us an insightful talk that evening on how she creates the designs for her quilts utilizing photos and fabrics that many of us would never have thought to put together. I know a number of our members purchased her patterns. It will be great in the months ahead to see the quilts that you create from them.

In November Carol Anne Grotrian came to the guild and gave a wonderful talk about landscape quilts and how they can are not as contemporary as many of us thought. The first of her two-part class was held with 10 students attending. We learned the first phase of taking a photo and turning it into a landscape quilt. The second class will be held on February 3rd, with a snow date of February 10th, at Anne's Fabrics starting at 10:00 am.

Our January meeting (**rescheduled to February**) will showcase seven of our members who volunteered to teach us a special technique. Each teacher will have 10 minutes for the demo and then we will move around the room to each station. Our instructors have given us a copy of the instructions for the technique that they are demoing and each member who attends that night will receive a copy. The topics that will be addressed at the meeting are:

Diana Annis – English Paper Piecing
Sue Crane – Flange Binding and Improv Blocks
Janet Elia – Hawaiian Applique
Marie Fowler – Easy Mitered Corners
Sue Goldstein – Back Basting Applique
Kathy Graves – Webbing a Quilt Top
Margaret Rolph – Embellishing Quilts with Beading

The February meeting will be a Comfort Quilt evening. We already have a number of members who have volunteered to sew that evening and I will be bringing the list to the January meeting so that we can hopefully get more. I have volunteers who have already helped me prep the quilt kits for the evening. Please come and join us. It is a great night to work on comfort quilts and to also get to know other members.

On February 24th we also have Bob Harrison coming to give us a ½ day workshop on maintaining Featherweight sewing machines. We still have 1 slot open for someone who is interested. This class will be held at All About Quilts and it begins at 9:30 am.

In March Kathy Graves is providing us a modern quilting lecture and trunk show at our meeting. She will be teaching a workshop on March 24th on a contemporary version of a double wedding ring using the Quick Curve Ruler by Sew Kind of Wonderful. The class is currently full but we will take names for a wait list.

Terry Greenstein, Program Chair

NOVEMBER 18 and FEBRUARY 3, 2018



Carol Anne Grotrian – Quilts with a View: New Landscape Traditions

American artists, including needle workers have naturally turned to the land for inspiration. This lecture touches on the appearance of landscape in antique quilts, looks at the diverse views and viewpoints of contemporary quilters and, on a personal note, includes a few of my landscape quilts among projected images and in person.

Workshop - Snapshot: Start A Picture Quilt

Create fabric pictures--landscape, still life, etc.-- based on assigned snapshots that you bring to class. Pick your favorite photo and adapt it to quilting, using simple tools like photocopies and tracing paper. Begin selecting fabrics that will bring the image to life. The first day the class will produce designs on paper. We will return in February to fuse the fabric sketches.



FEBRUARY 21 ~ rescheduled from **JANUARY 17**

Member Demo Night

This evening a number of our members will share different quilting and embellishing techniques. – Please check out the website for pictures!!!

Diana Annis – English Paper Piecing

Sue Crane – Improv quilting and Binding with Attached Flange

Janet Elia – Hawaiian Applique

Marie Fowler – Mitered Corners

Sue Goldstein – Reverse applique

Kathy Graves – Piecing Technique

Margaret Rolph – Bead Embellishment



ALSO in FEBRUARY 21

Comfort Quilt Sew-a-thon

This evening our guild members will bring their machines to the meeting and we will participate in making comfort quilts. Some of us will be cutting fabric, others sewing, others ironing and at the end of the evening we hope to have a number of quilts created.

FEBRUARY 24, 2018



Workshop – Bob Harrison – Featherweight Maintenance

This will be a half-day (3½ hour) workshop covering all the aspects of cleaning, oiling, and polishing of your Featherweight, Singer's fabulous Model #221/222. All aspects of Featherweight maintenance are demonstrated using a live feed camera for greater visibility and enlargement of the machine's interior. After demonstrations, students then perform the same tasks on their own Featherweights so that they leave the workshop confident in their own skills at keeping their little machine

humming happily along. Machine parts and accessories are available at the workshop as are simple repairs.



MARCH 21 - Kathy Graves – Modern Quilting Lecture and Trunk Show

Kathy will be here to explore the Modern Quilt movement with us. Modern quilts are constructed using a group of techniques and characteristics that identify them as “Modern”, although Modern quilters are varied in their style. Kathy will explore the various techniques used by Modern quilters including minimalism, negative space, improv, use of bold colors and graphics, modern traditionalism, and alternative grid structures. Her presentation will include quilt photos from QuiltCon, the Modern Quilt Show. Kathy will also present a trunk show, using her personal quilts as examples of various Modern techniques.



MARCH 24 - Kathy Graves – Metro Rings Workshop: A Contemporary version of Double Wedding Ring Quilt

Together we will explore and learn the fast, fun way to sew curves (without clipping or pinning) using the Quick Curve Ruler by Sew Kind of Wonderful. Their clever pattern allows for making oversized blocks and squaring up for improved accuracy and take the stress out of making seams exact. You will use 2.5" stripes either from precuts or fabric to make the curved -section. You will be amazed how easily your design will come together.



APRIL 18 - Timna Tarr – Trunk Show – Flying Colors

Timna is known for making fun, colorful, award-winning quilts. Join her for this trunk show of her quilting journey. She talks about her design and color choices, as well as the personal stories behind the quilts.

APRIL 19 - WORKSHOPS

Designing with Flying Colors (2-3 hours, no sewing)

Are you stuck in a color rut? Or are you afraid that you might make a color “mistake” in your quilts? In this workshop, students try out new color combinations and learn how to use color placement as a major design element. Participants should bring 10, 6" squares of different fabrics from their stash to the workshop.



Map Quilts (3 hours, sewing) In this three-hour workshop participants learn to make a quilted map based on a paper map. Everyone in the group works from the same map, which will be a map of Cape Cod.



MAY 16 - Pam Weeks - "Jane Stickled Revealed"

Pam Weeks, the Binney Family Curator of the New England Quilt Museum, will lecture on her newest topic. In the 150th anniversary year of the making of the Jane Stickled quilt, she was invited to examine and do further research on this iconic Civil War quilt. Her lecture reveals the results of her research and sheds light on the life of this Vermont farm wife who made an incredible quilt.

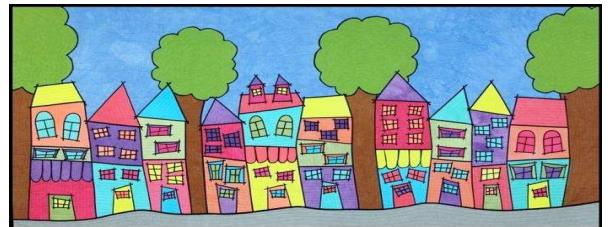


There are a number of guild members who have been working on a Dear Jane quilt for a number of years. We invite all members who have made a Dear Jane quilt to bring them to the meeting this evening.



JUNE 20 - Sue Bleisweiss - Trunk Show

Sue, an award-winning full-time fiber artist will provide us with a trunk show for our final evening. Working with her own hand dyed cotton she creates vibrant, whimsical colorful art quilts intended to delight the eye of the viewer and draw them in for a closer look.



So Many Great Programs – Please participate in as many as you can – Grow your skills , make new friends and you might even get a quilt out of it!!



NEW ENGLAND QUILT MUSEUM

18 SHATTUCK ST., LOWELL, MASSACHUSETTS 01852

nequiltmuseum.org

NEWS FROM THE NEW ENGLAND QUILT MUSEUM CURRENT EXHIBITS & UPCOMING EVENTS

IN THE MAIN GALLERIES:

January 10 - April 21, 2018

Quilts Japan: The 13th Quilt Nihon from Tokyo

April 25 – July 8, 2018

THE QUILTED CANVAS II: Featuring Molly Upton, Susan Hoffman, Beth and Jeffrey Gutcheon

July 11 – Sept 23, 2018

H2Oh!: Studio Art Quilt Associates

GENRE EXHIBITIONS ALSO ON VIEW

January 10 - April 29, 2018

THE HAND QUILTED
WORKS OF GLADI PORSCHE

May 1 - July 15, 2018

BEYOND THE BORDER WALL
The Migrant Quilt Project

July 18 - September 30, 2018

MATERIAL GIRLS QUILT GUILD
Winner of NEQM Summer
Celebration 2017

Interested in teaching a class or workshop at NEQM?

The NEQM is currently seeking instructors to rent their Classroom Gallery for classes and workshops. Please email Pam Weeks at curator@nequiltmuseum.org or call 978-452-4207 x.11 to express your interest. If you have a great idea for a class or workshop or are an instructor with a current repertoire, they would love to hear from you!

NEQM Library

Everyone can visit the library to: browse and research thousands of reference books in person or at online; read current issues of quilt magazines; find information on quilt guilds and quilt shows in New England; try quilt software; and print fabric labels on our computer.

Individual Museum members can also: borrow from the circulating collection, which contains thousands of items for adults and children including quilt and textile history, contemporary quilt design, quilt fiction, and videos; and have books and videos mailed to them anywhere in the U.S. for the cost of postage.

For more information on exhibitions and events, see: nequiltmuseum.org

Local Quilts Shows and Event

Thimble Pleasures

March 17-18, 2018, Saturday & Sunday 10 a.m. to 4 p.m.

Blackstone Valley Technical School in Upton, MA

65 Pleasant Street (off Rt. 140), Upton, MA

Ample parking and handicapped accessible

Admission is \$7, children 18 and under are admitted free

Quinobequin Quilters Guild

Friday, March 23-, 2018; 10 am to 8 pm

Saturday, March 24, 2018; 10 am to 4 pm

check website for details

CLASSIFIED ADS - FOR SALE

Please send the following information to editor@rnqg.org, if you have a quilt related item you would like to advertise:

Item for Sale:

Description: *(include condition of item - new, used, etc.)*

Asking Price: *(also include if price is firm, negotiable, or best offer)*

Contact information:

Advertising is free for RNQG members and \$1.00, per newsletter, for non-members (\$5.00 for the year).

Support RNQG members and local businesses

Do you have a business you would like to advertise? Please send an email to editor@rnqg.org for information.



Visit Kathy's website at <http://nextgenerationquilting.net>



REMINDER

Always show your RNQG membership card to receive a discount on your purchases at
All About Quilts, Walpole, MA and Ann's Fabrics, Canton, MA and Franklin Mills

Useful links to quilt related events and information are:
<http://www.quiltersresources.net> and <http://quiltnewengland.com/>

Note from your Newsletter lady –

I apologize for the delayed newsletter this month. Deadlines are not my thing!
Way to help get your information into the RNQG - email me at vparyar307@gmail.com with
NEWSLETTER in the subject line (that way I can find your email in the frey of emails)!!

Heads up – I will be out of the country for the month of February – your March/April newsletter will be
delivered mid-March
